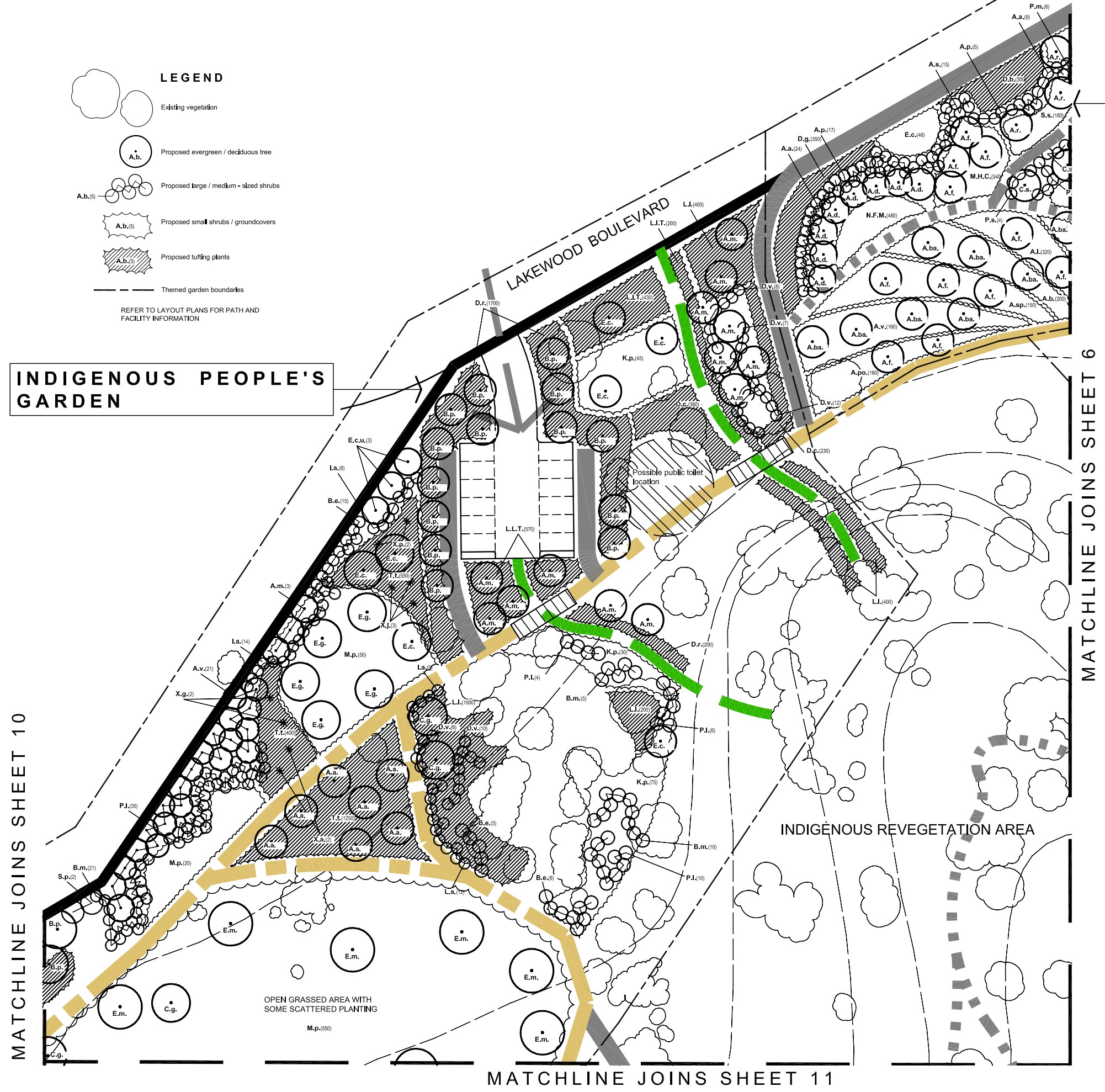


SOUTH AFRICAN GARDEN
REFER TO SHEET 6 FOR PLANT SCHEDULE

INDIGENOUS PEOPLE'S GARDEN

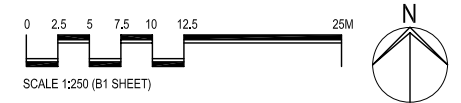
**PLANT SCHEDULE
INDIGENOUS PEOPLE'S GARDEN**

KEY	BOTANIC NAME	QTY.
A.a.	ACACIA ANEURA	10
A.m.	ACACIA MELANOXYLON	20
A.v.	ALLOCASUARINA VERTICILLATA	21
B.e.	BANKSIA ERICIFOLIA	42
B.m.	BANKSIA MARGINATA	59
B.p.	BRACHYCHITON POPULNEUS	22
C.g.	CALLITRIS GLAUCOPHYLLA	5
D.c.	DIANELLA CAERULEA	1840
D.r.	DIANELLA REVOLUTA	1900
D.v.	DODONAEA VISCOSA	52
D.v.p.	DODONAEA VISCOSA 'PURPUREA'	19
E.c.	EUCALYPTUS CAMALDULENSIS	9
E.g.	EUCALYPTUS GLOBOIDEA	5
E.m.	EUCALYPTUS MELLIODORA	14
E.cu.	EXOCARPUS CUPRESSIFORMIS	5
I.a.	INDIGOFERA AUSTRALIS	53
K.p.	KENNEDIA PROSTRATA	175
L.L.	LOMANDRA LONGIFOLIA	2250
L.L.T.	LOMANDRA LONGIFOLIA 'TANIKA'	1200
M.a.	MELALEUCA ARMILARIS	3
M.q.	MELALEUCA QUINQUENERVIA	12
M.p.	MYOPORUM PARVIFOLIUM	700
P.I.	PERSOONIA LINEARIS	70
P.l.a.	POA LABILLARDIERI	880
S.p.	SYZYGIUM PANICULATA	6
T.I.	THEMEDA TRIANDRA	2500
T.te.	TETRAGONIA TETRAGONIOIDES	55
X.a.	XANTHORRHOEA AUSTRALIS	2
X.g.	XANTHORRHOEA GLAUCA	2
X.j.	XANTHORRHOEA JOHNSONII	3
X.p.	XANTHORRHOEA PREISSII	2



FRAMEWORK PLANTING PLAN (SHEET 8 OF 15)

**MELTON BOTANIC GARDEN
SHIRE OF MELTON**



PRINT ISSUE: Report 13-03-09
Report 15-04-09

REVISIONS: REV A 02-03-09
REV B 14-04-09

Drawn: M. B.
Date: 09-02-09

Michael Smith and Associates
Landscape Architecture and Urban Design
Office: 1st Floor, 407 Whitehorse Road, Balwyn, 3103
Postal: 5 Jervis Street, Camberwell, 3124
Tel: 9830 0414 Fax: 9830 2555

In association with:
Brecknock Consulting Pty Ltd
Practical Ecology Pty Ltd
Traffix Group Pty Ltd
Paoli Smith Pty Ltd